



Contact US

Website: <https://www.switcgearfactory.com/>

LinkedIn: www.linkedin.com/company/dsj-electrical

Youtube: www.youtube.com/@DSJElectric

Email: info@dsjpowerlink.com

Address: FLC Center, Chaoyang, Beijing, China



-Transformer- Product Catalog DSJ Electrical Co.,Ltd





About DSJ

Building Power, Building Trust: **42 Years of Excellence**

Founded in 1983, DSJ has established itself as a leading force in China's electrical distribution industry, with 42 years of expertise in both medium-voltage and low-voltage electrical products.

As an outstanding enterprise, DSJ boasts independent research, development, production, and sales capabilities, ensuring that we can meet customers' needs with the fastest delivery and the highest level of customization. Our workforce consists of over 300 employees, including 50 senior management professionals, 30 experienced engineers, 8 senior designers, and 5 senior technicians.

We specialize in the manufacturing of distribution, circuit protection, and photovoltaic products that exceed both national and international quality standards. Over the past 40 years, DSJ has provided high-quality, safe electrical products to public facilities, large enterprises, and residential sectors worldwide, with one of the lowest return rates in the industry.

As a well-recognized Chinese brand, DSJ is dedicated to upholding our brand integrity. We adhere to the core philosophy of "Quality First, Customer Priority, and Integrity at the Core," striving to bring premium Chinese power equipment and exceptional service capabilities to customers worldwide.

Core Ideology

Quality First

Customer Priority

Integrity at the Core

 **40+**
Years of Excellence

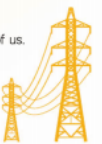
Established in 1983, DSJ has delivered trusted solutions for over four decades, solidifying its position as a pioneer in electrical equipment.

 **15,000+**
Square Meters of Facility

Strong manufacturing capabilities, with the capacity to produce 8,000 units per month.

 **\$108**
Million in Revenue

The continuous growth in sales volume demonstrates the market's recognition of us.



Factory Introduction



DSJ is a financially robust company with a registered capital of **7.84 million USD** and a facility spanning more than **15,000 square meters**.

Our production capabilities are supported by **30 units** of intelligent product testing and debugging equipment, **50 machine tools**, and **6 automated production lines**.

DSJ is also home to four innovation laboratories, holding more than **60 national invention patents**.

Crafting Quality Electrical Products for Over 40 Years



Honors and Certifications

• We are holding more than 60 national invention patents

Invention Patent



Utility Model Patent



• We have been awarded numerous prestigious national-level honors





油浸式电力变压器系列

Oil immersed power transformer series

油浸式变压器，是以油作为变压器主要绝缘手段，并依靠油作冷却介质，如油浸自冷，油浸风冷，油浸水冷及强迫油循环等。变压器的主要部件有铁芯，绕组，油箱，油枕，呼吸器，防爆管（压力释放阀），散热器，绝缘套管，分接开关，气体继电器，温度计，净油器等。油浸式变压器是电力系统的重要设备之一。满足各种不同电压等级的用电设备的要求，满足大容量电力系统运行的要求。随着社会经济和科学技术的发展，尤其是计算机技术和数字技术在电力系统中的应用，油浸式变压器将会得到进一步发展。

Oil-immersed transformer, oil as the main means of insulation, and rely on oil as a cooling medium, such as oil-immersed self-cooling, oil-immersed air-cooled, oil-immersed water-cooled and forced oil circulation. The main parts of the transformer core, winding, oil tank, oil pillow, breather, explosion-proof tube (pressure relief valve), radiator, insulating bushings, tap changer, gas relay, thermometer, oil purifier and so on. Oil-immersed transformer is one of the important equipments of power system. To meet the requirements of a variety of different voltage levels of power equipment, to meet the requirements of large-capacity power system operation. With the development of social economy and science and technology, especially the application of computer technology and digital technology in the power system, oil-immersed transformer will be further developed.

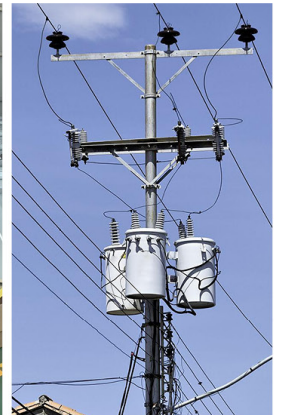


单相柱上变压器系列

Single-phase column-mounted transformer series

单相变压器是一种利用电磁感应原理来改变交流电压的装置，主要构件包括初级线圈、次级线圈和铁心（磁芯）。单相变压器即一次绕组和二次绕组均为单相绕组的变压器，其结构简单、体积小、损耗低，适宜在负荷密度较小的低压配电网中应用和推广。

Single-phase transformer is a use of electromagnetic induction to change the AC voltage device, the main components include the primary coil, secondary coil and core (core). Single-phase transformer that the primary winding and secondary winding are single-phase winding transformer, its structure is simple, small size, low loss, suitable for the application and promotion of low voltage distribution network in the load density is small.





高、低成套设备

High voltage switchgear series

高、低成套设备配电装置，又称成套开关设备或开关柜，是包括金属封闭开关设备、气体绝缘金属封闭开关设备 (GIS) 以及高压 / 低压预装式变电站等电气设备；GGJ、GGD、GCK、XL-21、JP 低压开关柜、配电柜、控制箱、开关箱等电气设备的总称。主要适用于发电厂、变电站、电力系统变电所、石油化工、冶金轧钢、轻工纺织、厂矿企业和住宅小区、高层建筑等各种不同场所。

High and low complete sets of equipment distribution equipment, also known as complete sets of switchgear or switchgear, is including metal-enclosed switchgear, gas-insulated metal-enclosed switchgear (GIS), and high-voltage/low-voltage pre-assembled substations and other electrical equipment; GGJ, GGD, GCK, XL-21, JP low-voltage switchgear, distribution cabinets, control boxes, switch boxes, and other electrical equipment, the general term. Mainly applicable to power plants, substations, power system substations, petrochemical, metallurgical rolling steel, light industry and textile, factories and mining enterprises and residential communities, high-rise buildings and other different places.



精密化设备 充足生产

Precision equipment, adequate production

为客户提供标准化服务与全方位解决方案，引进自动化生产设备，大型光纤激光切割机、数控折弯机，数控剪板机，300吨数控冲床，模具制造应用计算机辅助设计 (CAD)，车、铣、刨、磨、钻、冲压、气动压力压帽机、电气焊等生产设备，实现流水线作业，技术到一线控制到细节，保证产品的一致性、可靠性和追溯性。

To provide customers with standardized services and comprehensive solutions, the introduction of automated production equipment, large fiber laser cutting machine, CNC bending machine, CNC shearing machine, 300 tons CNC punching machine, mold manufacturing application computer aided design (CAD), turning, milling, planing, grinding, drilling, stamping, pneumatic pressure cap machine, electric welding and other production equipment, to achieve assembly line operations, Technology to the front line control to the details to ensure product consistency, reliability and traceability.





持续创新，稳定品质
Continuous innovation and stable quality

科学管理，提高企业效益
Scientific management to improve business efficiency!

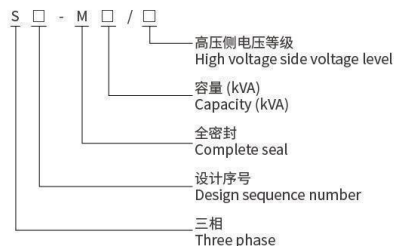
10kV、20kV/S13、S20、S22 油浸式配电变压器 Oil-immersed distribution transformer

产品概述 Product Overview

S13、S20、S22 系列全密封油浸式变压器适用于交流 50Hz、额定工作电压 20kV 及以下的电力系统中，作为石油、冶金、化工、纺织、轻工等企业及粉尘较大场所的配电变压器。

S13, S20, S22 series of fully sealed oil-immersed transformers are suitable for AC 50Hz, rated working voltage 20kV and below in the power system, as petroleum, metallurgy, chemical, textile, light industry and other enterprises and large dust places of the distribution transformer.

型号含义 Model meaning



10kV、20kV/S13、S20、S22

油浸式配电变压器 Oil-immersed distribution transformer

产品特点 Characteristics of the product

· 铁芯

铁芯选用高导磁晶粒取向冷轧硅钢片。铁芯为新式铁芯，全斜接缝迭积式铁芯，其铁芯柱为多级阶梯的圆截面，铁轭与铁芯为等截面。

· 绕组

绕组采用瓦楞油道，不浸漆工艺，紧缩带绑扎；绕组均为同心式线圈：高压绕组具有对应分接电压要求的抽头，引至分接开关上，开关安装在箱盖上、且需切断电源后方可变换分接电压。

· 安全保护装置

30~2000kVA 变压器装有压力释放阀；

根据用户需求可安装具有报警和跳闸端子的气体继电器；

· 油温测量装置

变压器均装有玻璃温度计的管座，管座设在油箱顶部，伸入油内 120±10mm；

1000~2000kVA 变压器装有户外式信号温度计；

· 变压器油箱

变压器油箱由波纹壁构成，表面采用粉尘

喷涂、漆膜牢固。波纹散热片不但具有冷却功能，而且具有“呼吸”功能，波纹散热片的弹性可补偿因温度升降而引起的变压器油体积的变化。因此全密封变压器没有储油柜，降低了变压器整体高度；

变压器在封装时采用真空注油工艺，完全去除了变压器中的潮气，变压器油不与空气接触。有效地防止氧气和水分子侵入变压器而导致变压器绝缘性能下降和变压器油老化的可能，因此不定期进行油样试验；

· Iron core

The core is cold rolled silicon steel sheet with high permeability magnetic grain orientation. The iron core is a new type of iron core, full oblique joint stacking type iron core, the iron core column is a circular section of multi-stage steps, and the iron yoke and the iron core are equal sections.

· Winding

The winding adopts corrugated oil channel, no paint dipping process, and tight tape binding; The windings are concentric coils: the high voltage winding has a tap required for the tapping voltage, which is led to the tap-changer, the switch is installed on the box cover, and the power supply can be changed before the tapping voltage.

· Safety protection device

30~2000kVA transformer is equipped with pressure relief valve;

Gas relays with alarm and tripping terminals can be installed according to user requirements;

· Oil temperature measuring device

The transformer is equipped with a glass thermometer tube base, the tube base is located on the top of the tank, and extends into the oil 120±10mm;

1000~2000kVA transformer equipped with outdoor signal thermometer;

· Transformer tank

The transformer oil tank is composed of corrugated walls with dust surface

Spray, paint film firmly. The corrugated heat sink not only has a cooling function, but also has a "breathing" function, and the elasticity of the corrugated heat sink can compensate for the change in the volume of transformer oil caused by the temperature rise and fall. Therefore, the fully sealed transformer has no oil storage tank, reducing the overall height of the transformer;

When the transformer is packaged, the vacuum oiling process is used to completely remove the moisture in the transformer, and the transformer oil does not contact with the air. It can effectively prevent the oxygen and moisture from invading the transformer and lead to the deterioration of the transformer insulation performance and the transformer oil aging, so the oil sample test is carried out from time to time.

10kV、20kV/S13、S20、S22

油浸式配电变压器 Oil-immersed distribution transformer

S13-M 型 10kV 级 油浸式三相双绕组无励磁调压配电变压器技术参数

Technical parameters of S13-M 10kV oil-immersed three-phase double-winding unexcited voltage regulation distribution transformer

额定容量 Rated capacity (kVA)	高压 High tension (kV)	高压分接范围 High pressure tap range (%)	低压 Low pressure (kV)	S13-M			空载电流 No-load current %	短路阻抗 Short-circuit impedance (%)	
				电工钢带 Electrical steel strip					
				空载损耗 No-load loss W	负载损耗 Load loss W				
Dyn11/Yzn11	Yyn0								
30	6 6.3 10 10.5	±2×2.5 ±5	0.4	80	630	710	1.20	4.0	
50				100	910	100	1.04		
63				110	1090	1380	0.96		
80				130	1310	1380	0.96		
100				150	1580	1570	0.88		
125				170	1890	1850	0.88		
160				200	2310	2130	0.80		
200				240	2730	2530	0.80		
250				290	3200	2760	0.72		
315				340	3830	3470	0.72		
400				410	4520	3990	0.64		
500				480	5410	4880	0.64		
630				570	6200	4880	0.48		4.5
800				700	7500	4880	0.48		
1000				830	10300	4880	0.48		
1250				970	12000	4880	0.40		
1600	1170	14500	4880	0.40	5				
2000	1360	18300	0.32						
2500	1600	21200	0.32						

注：尺寸仅供参考，以实际提供的图纸和尺寸为准。

Note: The dimensions are for reference only and are subject to the actual drawings and dimensions provided.

10kV、20kV/S13、S20、S22

油浸式配电变压器 Oil-immersed distribution transformer

S20-M 型 10kV 级 油浸式三相双绕组无励磁调压配电变压器技术参数

Technical parameters of S20-M 10kV oil-immersed three-phase double-winding unexcited voltage regulation distribution transformer

额定容量 Rated capacity (kVA)	高压 High tension (kV)	高压分接范围 High pressure tap range (%)	低压 Low pressure (kV)	S20-M			空载电流 No-load current %	短路阻抗 Short-circuit impedance (%)	
				电工钢带 Electrical steel strip					
				空载损耗 No-load loss W	负载损耗 Load loss W				
Dyn11/Yzn11	Yyn0								
30	6 6.3 10 10.5	±2×2.5 ±5	0.4	70	505	480	1.20	4.0	
50				90	730	695	1.04		
63				100	870	830	0.96		
80				115	1050	1000	0.96		
100				135	1265	1200	0.88		
125				150	1510	1440	0.88		
160				180	1850	1760	0.80		
200				215	2185	2080	0.80		
250				260	2560	2440	0.72		
315				305	3065	2920	0.72		
400				370	3615	3440	0.64		
500				430	4330	4120	0.64		
630				510	4960	4880	0.48		4.5
800				630	6000	4880	0.48		
1000				745	8240	4880	0.48		
1250				870	9600	4880	0.40		
1600	1050	11600	4880	0.40	5				
2000	1225	14640	0.32						
2500	1440	14840	0.32						

注：尺寸仅供参考，以实际提供的图纸和尺寸为准。

Note: The dimensions are for reference only and are subject to the actual drawings and dimensions provided.

10kV、20kV/S13、S20、S22

油浸式配电变压器 Oil-immersed distribution transformer

S22-M 型 10kV 级 油浸式三相双绕组无励磁调压配电变压器技术参数

Technical parameters of S22-M 10kV oil-immersed three-phase double-winding unexcited voltage regulation distribution transformer

额定容量 Rated capacity (kVA)	高压 High tension (kV)	高压分接范围 High pressure tap range (%)	低压 Low pressure (kV)	S22-M			空载电流 No-load current %	短路阻抗 Short-circuit impedance (%)
				电工钢带 Electrical steel strip				
				空载损耗 No-load loss W	负载损耗 Load loss W			
Dyn11/Yzn11	Yyn0							
30	6 6.3 10 10.5	±2×2.5 ±5	0.4	65	455	430	1.20	4.0
50				80	655	625	1.04	
63				90	785	745	0.96	
80				105	945	900	0.96	
100				120	1140	1080	0.88	
125				135	1360	1295	0.88	
160				160	1665	1585	0.80	
200				190	1970	1870	0.80	
250				230	2300	2195	0.72	
315				270	2760	2630	0.72	
400				330	3250	3095	0.64	
500				385	3900	3710	0.64	
630				460	4460	0.48	4.5	
800				560	5400	0.48		
1000				665	7415	0.48		
1250	780	8640	0.40	5				
1600	940	10440	0.40					
2000	1085	13180	0.32					
2500	1280	13360	0.32					

注：尺寸仅供参考，以实际提供的图纸和尺寸为准。

Note: The dimensions are for reference only and are subject to the actual drawings and dimensions provided.

10kV、20kV/S13、S20、S22

油浸式配电变压器 Oil-immersed distribution transformer

S13-M 型 20kV 级油浸式三相双绕组无励磁调压配电变压器技术参数

Technical parameters of S13-M 20kV oil-immersed three-phase double-winding unexcited voltage regulation distribution transformer

额定容量 Rated capacity (kVA)	高压 High voltage (kV)	高压分接范围 High pressure tap range (%)	低压 Low pressure (kV)	联结组标号 Join group label	S13		空载电流 No-load current (%)	短路阻抗 Short-circuit impedance (%)	
					空载损耗 No load loss kW	负载损耗 Load loss kW			
30	20	±2×2.5 ±5	0.4	Dyn11 Yzn11 Yyn0	80	660/630	1.70	5.5	
50					100	960/910	1.60		
63					120	1140/1090	1.50		
80					140	1370/1300	1.40		
100					160	1640/1570	1.30		
125					190	1980/1880	1.20		
160					230	2410/2300	1.10		
200					270	2850/2720	1.00		
250					320	3340/3180	0.96		
315					380	4000/3810	0.88		
400					460	4720/4490	0.80		
500					540	5640/5380	0.80		
630					650	6480	0.72		6.0
800					780	7840	0.64		
1000					920	10700	0.56		
1250	1100	12500	0.56						
1600	1330	15100	0.48						
2000	1560	19100	0.48						
2500	1870	22200	0.40						

注：1、表中斜线上方的负载损耗适用于 Dyn11 联结组，斜线下方的负载损耗值适用于 Yyn0 联结组。

2、其它容量的产品性能参数，由用户与制造厂协商确定。

3、尺寸仅供参考，以实际提供的图纸和尺寸为准。

Note: 1. The load loss above the slash line in the table applies to the Dyn11 connection group, and the load loss value below the slash line applies to the Yyn0 connection group.

2, other capacity of the product performance parameters, determined by the user and the manufacturer.

3, the size is for reference only, based on the actual drawings and dimensions.

10kV、20kV/S13、S20、S22

油浸式配电变压器 Oil-immersed distribution transformer

S20-M 型 20kV 级油浸式三相双绕组无励磁调压配电变压器技术参数

Technical parameters of S20-M type 20kV oil-immersed three-phase double-winding unexcited voltage regulation distribution transformer

额定容量 Rated capacity (kVA)	高压 High voltage (kV)	高压分接范围 High pressure tap range (%)	低压 Low pressure (kV)	联结组标号 Join group label	S20		空载电流 No-load current (%)	短路阻抗 Short-circuit impedance (%)
					空载损耗 No load loss kW	负载损耗 Load loss kW		
30	20	$\pm 2 \times 2.5$ ± 5	0.4	Dyn11 Yzn11 Yyn0	70	528/504	1.70	5.5
50					90	768/728	1.60	
63					110	912/872	1.50	
80					125	1096/1040	1.40	
100					145	1312/1256	1.30	
125					170	1584/1504	1.20	
160					205	1928/1840	1.10	
200					245	2280/2176	1.00	
250					290	2672/2544	0.96	
315					340	3200/3048	0.88	
400					415	3776/3592	0.80	
500					485	4512/4304	0.80	
630					585	5184	0.72	6.0
800					700	6272	0.64	
1000					830	8560	0.56	
1250					990	10000	0.56	
1600					1200	12080	0.48	
2000	1405	15280	0.48					
2500	1680	17760	0.40					

注：尺寸仅供参考，以实际提供的图纸和尺寸为准。

Note: The dimensions are for reference only and are subject to the actual drawings and dimensions provided.

10kV、20kV/S13、S20、S22

油浸式配电变压器 Oil-immersed distribution transformer

S22-M 型 20kV 级油浸式三相双绕组无励磁调压配电变压器技术参数

Technical parameters of S22-M type 20kV oil-immersed three-phase double-winding unexcited voltage regulation distribution transformer

额定容量 Rated capacity (kVA)	高压 High voltage (kV)	高压分接范围 High pressure tap range (%)	低压 Low pressure (kV)	联结组标号 Join group label	S22		空载电流 No-load current (%)	短路阻抗 Short-circuit impedance (%)
					空载损耗 No load loss kW	负载损耗 Load loss kW		
30	20	$\pm 2 \times 2.5$ ± 5	0.4	Dyn11 Yzn11 Yyn0	65	460/440	1.70	5.5
50					80	670/635	1.60	
63					95	800/765	1.50	
80					110	960/910	1.40	
100					130	1150/1100	1.60	
125					150	1385/1315	1.50	
160					185	1690/1610	1.10	
200					215	1995/1905	1.00	
250					255	2340/2225	0.96	
315					305	2800/2665	0.88	
400					370	3305/3145	0.80	
500					430	3950/3765	0.80	
630					520	4535	0.72	6.0
800					625	5490	0.64	
1000					735	7490	0.56	
1250					880	8750	0.56	
1600					1065	10570	0.48	
2000	1250	13370	0.48					
2500	1495	15540	0.40					

注：尺寸仅供参考，以实际提供的图纸和尺寸为准。

Note: The dimensions are for reference only and are subject to the actual drawings and dimensions provided.



持续创新，稳定品质
Continuous innovation and stable quality

科学管理，提高企业效益
Scientific management to improve business efficiency!

10kV、20kV,SH15、SH21、SH25 油浸式非晶合金变压器系列 Oil-immersed amorphous alloy transformer series

产品概述 Product Overview

变压器可把电网电压转换成系统或负载所需要的电压，实现电能的传递与分配。本变压器可取代硅钢片铁芯的变压器而广泛用于户外的配电系统。本产品的大量入网运行可取得良好的节能效果并可减少对大气的污染。本产品特别适用于电能不足和负荷波动大以及难以进行日常维护的地区。由于变压器采用全密封结构，绝缘油和绝缘介质不受大气污染，因而可在潮湿的环境中运行，是城市和农村广大配电网中理想的配电设备。

The transformer can convert the voltage of the grid into the voltage required by the system or the load, and realize the transmission and distribution of electric energy. The transformer can replace the transformer of silicon steel sheet iron core and is widely used in outdoor distribution system. The large-scale operation of this product into the network can achieve good energy-saving effect and reduce the pollution to the atmosphere. This product is especially suitable for power shortage and load fluctuations and difficult to carry out daily maintenance areas. Because the transformer adopts a fully sealed structure, insulating oil and insulating media are not polluted by the atmosphere, so it can operate in a humid environment, and is the ideal distribution equipment in the vast distribution network in cities and rural areas.

10kV、20kV 油浸式非晶合金铁芯配电变压器 (通过短路试验)

10kV, 20kV oil-immersed amorphous alloy core distribution transformers (through short circuit test)

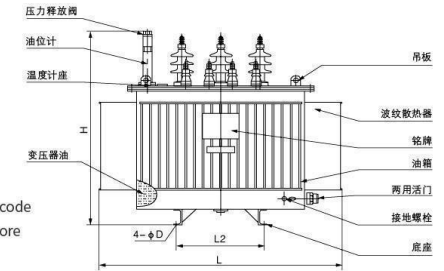
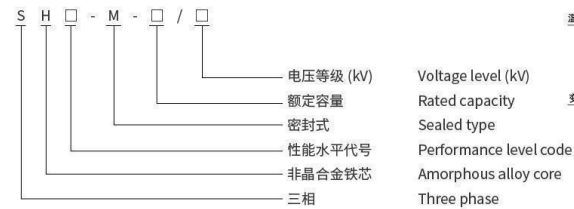
由于非晶合金铁芯不能承受机械力的作用，加之矩形线圈的机械强度较弱，因此非晶合金变压器通过短路试验成为变压器领域的一个技术难题。本公司运用成熟的技术经验成功地攻克了这一难关，自行设计开发SBH15-M-2500/10 配电变压器。在沈阳国家变压器质量监督检验中心一举通过了短路试验，这标志着本公司的非晶合金变压器的设计制造技术处于国际领先水平。

Because amorphous alloy core can not withstand the action of mechanical force, and the mechanical strength of rectangular coil is weak, amorphous alloy transformer through short circuit test has become a technical problem in transformer field. The company has successfully overcome this difficulty with mature technical experience, and has designed and developed the SBH15-M-2500/10 distribution transformer by itself. In Shenyang National transformer quality supervision and inspection Center passed the short circuit test, which marks the company's amorphous alloy transformer design and manufacturing technology in the international leading level.

10kV、20kV,SH15、SH21、SH25

油浸式非晶合金变压器 Oil-immersed amorphous alloy transformer series

型号含义 Model meaning



10kV、20kV,SH15 油浸式非晶合金变压器技术参数

10kV, 20kV, SH15 oil-immersed amorphous alloy transformer technical parameters

额定容量 Rated capacity kVA	电工钢带 Electrical steel band S13			非晶合金 Amorphous alloy SH15			短路阻抗 Short-circuit impedance %
	空载损耗 No load loss W	负载损耗 Load loss w		空载损耗 No load loss W	负载损耗 Load loss w		
		Dyn11/Yzn1	Yyn0		Dyn11/Yzn1	Yyn0	
30	80	630	600	33	630	600	4.0
50	100	910	870	43	910	870	
63	110	1090	1040	50	1090	1040	
80	130	1310	1250	60	1310	1250	
100	150	1580	1500	75	1580	1500	
125	170	1890	1800	85	1890	1800	
160	200	2.310	2200	100	2310	2200	
200	240	2730	2600	120	2730	2600	
250	290	3200	3050	140	3200	3050	
315	340	3830	3650	170	3830	3650	
400	410	4520	4300	200	4520	4300	4.5
500	480	5410	5150	240	5410	5150	
630	570	6200		320	6200		
800	700	7500		380	7500		
1000	830	10300		450	10300		
1250	970	12000		530	12000		5.0
1600	1170	14500		630	14500		
2000	1360	18300		720	18300		
2500	1600	21200		865	21200		

注：尺寸仅供参考，以实际提供的图纸和尺寸为准。
Note: The dimensions are for reference only and are subject to the actual drawings and dimensions provided.

10kV、20kV,SH15、SH21、SH25

油浸式非晶合金变压器 Oil-immersed amorphous alloy transformer series

10kV、20kV,SH21 油浸式非晶合金变压器技术参数

10kV,20kV,SH21 oil-immersed amorphous alloy transformer technical parameters

额定容量 Rated capacity kVA	电工钢带 Electrical steel band S21			非晶合金 Amorphous alloy SH21			短路阻抗 Short-circuit impedance %
	空载损耗 No load loss W	负载损耗 Load loss w		空载损耗 No load loss W	负载损耗 Load loss w		
		Dyn11/Yzn1	Yyn0		Dyn11/Yzn1	Yyn0	
30	70	505	480	33	535	510	4.0
50	90	730	695	43	780	745	
63	100	870	830	50	930	890	
80	115	1050	1000	60	1120	1070	
100	135	1265	1200	75	1350	1285	
125	150	1510	1440	85	1615	1540	
160	180	1850	1760	100	1975	1880	
200	215	2185	2.080	120	2330	2225	
250	260	2560	2.440	140	2735	2610	
315	305	3065	2920	170	3275	3120	
400	370	3615	3440	200	3865	3675	
500	430	4330	4120	240	4625	4400	
630	510	4960		320	5300		4.5
800	630	6000		380	6415		
1000	745	8240		450	8.800		
1250	370	9600		530	10260		
1600	1050	11600		630	12400		
2000	1225	14640		710	14800		5.0
2500	1440	14840		860	16300		

注：尺寸仅供参考，以实际提供的图纸和尺寸为准。

Note: The dimensions are for reference only and are subject to the actual drawings and dimensions provided.

10kV、20kV,SH15、SH21、SH25

油浸式非晶合金变压器 Oil-immersed amorphous alloy transformer series

10kV、20kV,SH25 油浸式非晶合金变压器技术参数

10kV,20kV,SH25 oil-immersed amorphous alloy transformer technical parameters

额定容量 Rated capacity kVA	电工钢带 Electrical steel band S25			非晶合金 Amorphous alloy SH25			短路阻抗 Short-circuit impedance %
	空载损耗 No load loss W	负载损耗 Load loss w		空载损耗 No load loss W	负载损耗 Load loss w		
		Dyn11/Yzn1	Yyn0		Dyn11/Yzn1	Yyn0	
30	65	455	430	25	510	480	4.0
50	80	655	625	35	735	700	
63	90	785	745	40	880	840	
80	105	945	900	50	1060	1010	
100	120	1140	1080	60	1270	1215	
125	135	1360	1295	70	1530	1450	
160	160	1665	1585	80	1870	1780	
200	190	1970	1870	95	2210	2100	
250	230	2300	2195	110	2590	2470	
315	270	2760	2630	135	3100	2950	
400	330	3250	3095	160	3660	3480	
500	385	3900	3710	190	4380	4170	
630	460	4460		250	5020		4.5
800	560	5400		300	6075		
1000	665	7415		360	8340		
1250	780	8640		425	9720		
1600	940	10440		500	11745		
2000	1085	13180		550	14000		5.0
2500	1280	13360		670	15450		

注：尺寸仅供参考，以实际提供的图纸和尺寸为准。

Note: The dimensions are for reference only and are subject to the actual drawings and dimensions provided.



持续创新, 稳定品质
Continuous innovation and stable quality

科学管理, 提高企业效益
Scientific management to improve business efficiency!

35kV 油浸式电力变压器 Oil-immersed power transformer

产品概述 Product Overview

该系列产品在设计上比较先进, 在材料、结构和工艺上进行了大幅度的改进和提高。高低压夹件采用钢拉带或上梁及侧梁拉紧, 形成坚固的框架结构, 增强铁芯夹紧力和耐受运输冲击能力。抗短路能力强, 外观选型美观, 运行可靠, 损耗低, 噪音小, 达到国外同类产品先进水平。

The series of products in the design is more advanced, in the material, structure and process has been greatly improved and improved. The high and low pressure clamps are tightened with steel pull belts or upper and side beams to form a strong frame structure, which enhances the clamping force of the iron core and the ability to withstand transportation impact. Strong short-circuit resistance, beautiful appearance selection, reliable operation, low loss, low noise, to the advanced level of similar foreign products.

执行标准 Implementation standards

GB 1094.1~2 《电力变压器总则》《油浸式变压器的温长》
GB 1094.3 《绝缘水平、绝缘试验和外绝缘空气间隙》
GB 1094.5 《电力变压器承受短路的能力》
GB/T 6451 《油浸式电力变压器技术参数和要求》
GB/T 15164 《油浸式电力变压器负载导则》
GB2536 《变压器油》

GB 1094.1~2 "General Rules of Power transformers" "Temperature length of oil-immersed transformers"
GB 1094.3 "Insulation level, insulation test and outer insulation air gap"
GB 1094.5 "Capacity of power transformer to withstand short circuit"
GB/T 6451 "Oil immersed power transformer technical parameters and requirements"
GB/T 15164 "Load Guidelines for Oil-immersed Power Transformers"
GB2536 "Transformer Oil"

35kV 油浸式电力变压器 Oil-immersed power transformer

型号含义 Model meaning



S18 型 35kV 油浸式电力变压器 (50kVA~2500kVA 三相双绕组无励磁调压配电变压器) 技术参数 S18 type 35kV oil-immersed power transformer (50kVA~2500kVA three-phase double-winding non-exciting voltage regulation distribution transformer) technical parameters

额定容量 Rated capacity (kVA)	高压 High voltage (kV)	高压分接范围 High pressure tap range (%)	低压 Low pressure (kV)	联结组标号 Join group label	S18		空载电流 No-load current (%)	短路阻抗 Short-circuit impedance (%)
					空载损耗 No load loss kW	负载损耗 Load loss kW		
50	35	±2×2.5 ±5	0.4	Dyn11 Yyn0	130	1140/1080	1.00	6.5
100					185	1910/1810	0.88	
125					215	2250/2150	0.88	
160					225	2680/2550	0.80	
200					270	3150/3000	0.80	
250					320	3750/3570	0.76	
315					385	4510/4300	0.76	
400					465	5450/5200	0.68	
500					545	6560/6250	0.68	
630					665	7470	0.52	
800					785	8930	0.52	
1000					920	10900	0.52	
1250					1120	1320	0.48	
1600					1350	15800	0.48	
2000					1590	19700	0.44	
2500	1890	23200	0.44					

35kV

油浸式电力变压器 Oil-immersed power transformer

S20 型 35kV 油浸式电力变压器 (50-2500) 三相双绕组无励磁调压配电变压器技术参数

S20 type 35kV oil-immersed power transformer (50-2500) three-phase double-winding non-exciting voltage regulation distribution transformer technical parameters

额定容量 (kVA) Rated capacity	高压 (kV) High voltage	高压分接范围 (%) High pressure tap range	低压 (kV) Low pressure	联络组标号 Join group label	S20		空载电流 (%) No-load current	短路阻抗 (%) Short-circuit impedance
					空载损耗 No load loss kW	负载损耗 Load loss kW		
50	35	±2×2.5 ±5	0.4	Dyn11 Yyn0	105	1085/1025	1.00	6.5
100					150	1815/1720	0.88	
125					170	2140/2045	0.88	
160					180	2545/2425	0.80	
200					215	2995/2850	0.80	
250					255	3565/3390	0.76	
315					310	4285/4085	0.76	
400					370	5180/4940	0.68	
500					435	6230/5940	0.68	
630					530	7100	0.52	
800					630	8485	0.52	
1000					735	10355	0.52	
1250					895	12540	0.48	
1600					1080	15010	0.48	
2000					1270	18715	0.44	
2500					1510	22040	0.44	

注: 1. 根据要求变压器的高压分接范围可供 ±2×2.5%。
2. 其它容量的产品性能参数, 由用户与制造商商定。
3. 尺寸仅供参考, 以实际提供的图纸和尺寸为准。

Note: 1, according to the requirements of the transformer high pressure tapping range can be ±2×2.5%.
2, other capacity of the product performance parameters, determined by the user and the manufacturer.
3, the size is for reference only, based on the actual drawings and dimensions.

S22 型 35kV 油浸式电力变压器 (50kVA~2500kVA 三相双绕组无励磁调压配电变压器) 技术参数

S22 type 35kV oil-immersed power transformer (50kVA~2500kVA three-phase double-winding non-exciting voltage regulation distribution transformer) technical parameters

额定容量 (kVA) Rated capacity	高压 (kV) High voltage	高压分接范围 (%) High pressure tap range	低压 (kV) Low pressure	联络组标号 Join group label	S20		空载电流 (%) No-load current	短路阻抗 (%) Short-circuit impedance
					空载损耗 No load loss kW	负载损耗 Load loss kW		
50	35	±2×2.5 ±5	0.4	Dyn11 Yyn0	90	1085/1025	1.00	6.5
100					130	1815/1720	0.88	
125					150	2140/2045	0.88	
160					160	2545/2425	0.80	
200					190	2995/2850	0.80	
250					225	3565/3390	0.76	
315					270	4285/4085	0.76	
400					325	5180/4940	0.68	
500					380	6230/5940	0.68	
630					465	7100	0.52	
800					550	8485	0.52	
1000					645	10355	0.52	
1250					785	12540	0.48	
1600					945	15010	0.48	
2000					1115	18715	0.44	
2500					1325	22040	0.44	

注: 尺寸仅供参考, 以实际提供的图纸和尺寸为准 (外形尺寸根据用户具体需要进行设计)。

Note: The dimensions are for reference only, based on the actual drawings and dimensions provided (the overall dimensions are designed according to the specific needs of users).

35kV

油浸式电力变压器 Oil-immersed power transformer

35kV 油浸式三相双绕组无励磁调压电力变压器技术参数

Technical parameters of 35kV oil-immersed three-phase double-winding unexcited voltage regulation power transformer

额定容量 Rated capacity kVA	1 级 level		2 级 level		3 级 level		短路阻抗 Short-circuit impedance %
	空载损耗 No-load loss kW	负载损耗 Load loss (75°C) kW	空载损耗 No-load loss kW	负载损耗 Load loss (75°C) kW	空载损耗 No-load loss kW	负载损耗 Load loss (75°C) kW	
3150	1.7	20.7	2.0	20.7	2.4	21.9	7
4000	2.0	24.6	2.3	24.6	2.9	25.9	
5000	2.4	28.2	2.8	28.2	3.5	29.7	
6300	2.9	31.5	3.4	31.5	4.2	33.3	
8000	4.0	34.6	4.7	34.6	2.8	36.5	8
10000	4.8	40.8	5.7	40.8	7.0	43.0	
12500	5.5	48.4	6.5	48.4	8.0	51.1	
16000	6.7	59.2	7.9	59.2	9.7	62.5	
20000	7.9	71.6	9.4	71.6	11.5	75.5	
25000	9.4	84.6	11.1	84.6	13.6	89.3	10
31500	11.1	100.8	13.1	100.8	16.2	106.4	

35kV 油浸式三相双绕组有载调压电力变压器能效等级

Energy efficiency class of 35kV oil-immersed three-phase double-winding on-load voltage-regulated power transformer

额定容量 Rated capacity kVA	1 级 level		2 级 level		3 级 level		短路阻抗 Short-circuit impedance %
	空载损耗 No-load loss kW	负载损耗 Load loss (75°C) kW	空载损耗 No-load loss kW	负载损耗 Load loss (75°C) kW	空载损耗 No-load loss kW	负载损耗 Load loss (75°C) kW	
3150	1.8	22.2	2.1	22.2	2.6	23.5	7
4000	2.1	26.2	2.5	26.2	3.1	27.6	
5000	2.6	30.8	3.0	30.8	3.7	32.5	
6300	3.1	33.0	3.7	33.0	4.5	34.9	7.5
8000	4.3	36.5	5.1	36.5	6.3	38.6	
10000	5.1	43.2	6.0	43.2	7.4	45.6	
12500	6.0	51.1	7.1	51.1	8.7	54.0	
16000	7.2	63.3	8.5	63.3	10.5	66.8	8
20000	8.5	74.4	10.1	74.4	12.4	78.6	
25000	10.1	88.0	11.9	88.0	14.6	92.9	
31500	12.0	104.4	14.2	104.4	17.4	110.2	10



持续创新，稳定品质
Continuous innovation and stable quality

科学管理，提高企业效益
Scientific management to improve business efficiency!

66kV 油浸式电力变压器 Oil-immersed power transformer

产品概述 Product Overview

66KV 三相油浸式电力变压器根据国际电工委员会标准 IEC60076 和中华人民共和国国家标准 GB1094 制造。频率：50Hz，容量范围：630-63000kVA，可作为电网的输配电用。

注 1：高海拔地区超过 1000 米须进行修正，具体修正要求见《高海拔外绝缘配置技术规范》Q/GDW 13001—2014

执行标准 Implementation standards

- 低损耗静音：铁芯采用高性能硅钢片及全自动机器人叠片，空载损耗降 5% - 15%，噪音低。
- 安全可靠：绝缘设计裕量大，局放量 ≤ 100pC。
- 维护便捷：线圈结构优化，紧固件防松，阀门选材佳，配多种监测装置，适应重污染环境。
- 经济高效：免维修、安装易，综合成本低。
- 防潮出色：100% 湿度可运行，停运后无需预干燥。

66KV three-phase oil-immersed power transformers are manufactured in accordance with the International Electrotechnical Commission standard IEC60076 and the national standard GB1094 of the People's Republic of China. Frequency: 50Hz, capacity range: 630-63000kVA, can be used for transmission and distribution of power grid.

Note 1: High altitude more than 1000 metres must be corrected, the specific correction requirements see "high-altitude external insulation configuration technical specifications" Q/GDW 13001-2014

- Low loss and quiet: the iron core adopts high-performance silicon steel sheet and automatic robot stacking, no-load loss is reduced by 5% - 15%, low noise.
- Safe and reliable: large insulation design margin, local discharge ≤ 100pC.
- Convenient maintenance: optimised coil structure, anti-loosening fasteners, good selection of valve materials, with a variety of monitoring devices, adapt to the heavy pollution environment.
- Economic and efficient: maintenance-free, easy to install, low overall cost.
- Excellent moisture-proof: 100% humidity can be operated, no need to pre-dry after shutdown.

66kV

油浸式电力变压器 Oil-immersed power transformer

66kV 油浸式三相双绕组无励磁调压电力变压器技术参数

Technical parameters of 66kV oil-immersed three-phase double-winding unexcited voltage regulation power transformer

额定容量 Rated capacity kVA	1 级 level		2 级 level		3 级 level		短路阻抗 Short-circuit impedance %
	空载损耗 No-load loss kW	负载损耗 Load loss (75°C) kW	空载损耗 No-load loss kW	负载损耗 Load loss (75°C) kW	空载损耗 No-load loss kW	负载损耗 Load loss (75°C) kW	
3150	2.2	20.7	2.6	20.7	3.2	21.9	8
4000	2.6	24.6	3.1	24.6	3.8	25.9	
5000	3.1	27.6	3.7	27.6	4.9	29.2	
6300	4.0	30.8	4.7	30.8	5.8	32.5	
8000	4.9	36.5	5.8	36.5	7.1	38.5	
10000	5.8	43.0	6.8	43.0	8.4	45.4	
12500	6.8	51.1	8.1	51.1	9.9	54.0	
16000	8.3	62.8	9.8	62.8	12.0	66.3	
20000	9.7	76.1	11.4	76.1	14.1	80.4	
25000	11.4	90.0	13.5	90.0	16.6	95.0	
31500	13.5	108.0	16.0	108.0	19.7	114.0	
40000	16.2	126.9	19.1	126.9	23.5	134.0	
50000	19.4	150.3	22.9	150.3	28.2	158.7	
63000	22.9	178.2	27.0	178.2	33.3	188.1	

66kV 油浸式三相双绕组有载调压电力变压器能效等级

66kV oil-immersed three-phase double-winding on-load voltage-regulating power transformer energy efficiency class

额定容量 Rated capacity kVA	1 级 level		2 级 level		3 级 level		短路阻抗 Short-circuit impedance %
	空载损耗 No-load loss kW	负载损耗 Load loss (75°C) kW	空载损耗 No-load loss kW	负载损耗 Load loss (75°C) kW	空载损耗 No-load loss kW	负载损耗 Load loss (75°C) kW	
6300	4.4	30.8	5.2	30.8	6.4	32.5	9
8000	5.3	36.5	6.2	36.5	7.7	38.5	
10000	6.2	43.0	7.3	43.0	9.0	45.4	
12500	7.4	51.1	8.7	51.1	10.7	54.0	
16000	8.9	62.8	10.5	62.8	12.9	66.3	
20000	10.6	76.1	12.5	76.1	15.4	80.4	
25000	12.5	90.0	14.8	90.0	18.2	95.0	
31500	14.8	108.0	17.5	108.0	21.5	114.0	
40000	17.7	126.9	20.9	126.9	25.8	134.0	
50000	20.9	150.3	24.7	150.3	30.4	158.7	
63000	24.7	178.2	29.2	178.2	35.9	188.1	



持续创新，稳定品质
Continuous innovation and stable quality

科学管理，提高企业效益
Scientific management to improve business efficiency!

110kV 油浸式电力变压器 Oil-immersed power transformer

产品概述 Product Overview

超高压变压器，利用日本东芝的分析软件和本公司特有的计算和验证程序，对变压器铁心、线圈、器身、引线、油箱等部件进行全方位的优化设计及验证，确保产品性能。优越的工艺设备、精心的材料选取、高效的生产制造，使得变压器具有体积小、重量轻、低损耗、低局放、低噪音等特点，产品品质优越、节能环保、安装维护方便，运行可靠并有效地降低了产品运行费用。

公司产品 SSZ11-40000/110 通过国家变压器质量监督检验中心短路承受能力及所有例行型式试验。

本产品具有稳定、信赖、经济、环保的特点，适用于发电厂、变电站、大型工矿石化企业等。

结构特征 Structural Characteristic

110kV 油浸式电力变压器是在消化吸收国内外技术的基础上，研制开发的性能可靠的低局放、低损耗、低噪音、高可靠性、具有很强的抗突发短路能力的换代产品。其卓越的性能赢得了广大用户和有关专家的高度评价。

• 局放量：1.5 倍的额定电压下，产品的视在放电电量小于 80pC；

Ultra-high voltage transformer, using Japan Toshiba analysis software and the company's unique calculation and verification procedures, transformer core, coil, body, lead, fuel tank and other components for a full range of optimization design and verification to ensure product performance. Superior process equipment, careful material selection, efficient production and manufacturing, making the transformer has the characteristics of small size, light weight, low loss, low office discharge, low noise, superior product quality, energy saving and environmental protection, easy installation and maintenance, reliable operation and effective reduction of product operating costs.

The company's product SSZ11-40000/110 passed the national transformer Quality supervision and inspection center short circuit endurance and all routine type tests.

This product has the characteristics of stability, trust, economy, environmental protection, suitable for power plants, substations, large industrial, mining and petrochemical enterprises.

110kV oil-immersed power transformer is a reliable low local discharge, low loss, low noise, high reliability, with a strong resistance to sudden short-circuit capability of the replacement product based on the digestion and absorption of domestic and foreign technology. Its excellent performance has won the high praise of the majority of users and experts.

• Local discharge: under 1.5 times of rated voltage, the apparent discharge of the product is less than 80pC; -Noise: 63MVA and below

110kV

油浸式电力变压器 Oil-immersed power transformer

- 噪音：63MVA 及以下的产品噪音在 58dB 以下 (AN)；
- 损耗：空载损耗比 IEC 标准低 30% 左右；
- 可靠性：所有在役产品未发生损伤事故和渗漏油的现象。

- Noise: the noise of products with 63MVA and below is below 58dB(AN).
- Loss: No-load loss is about 30% lower than IEC standard;
- Reliability: no damage accidents and oil leakage have occurred in all in-service products.

110kV 油浸式三相双绕组无励磁调压电力变压器技术参数

Technical parameters of 110kV oil-immersed three-phase double-winding unexcited voltage regulation power transformer

额定容量 Rated capacity kVA	1 级 level		2 级 level		3 级 level		短路阻抗 Short-circuit impedance %
	空载损耗 No-load loss kW	负载损耗 Load loss (75°C) kW	空载损耗 No-load loss kW	负载损耗 Load loss (75°C) kW	空载损耗 No-load loss kW	负载损耗 Load loss (75°C) kW	
6300	4.1	32	1.8	32	5.9	33	10.5
8000	4.9	38	5.8	38	7.1	40	
10000	5.8	45	6.8	45	8.4	48	
12500	6.8	53	8.1	53	9.9	56	
16000	8.3	65.7	9.8	65.7	12.0	69	
20000	9.7	79	11.4	79	14.1	84	
25000	11.4	94	13.5	94	16.6	99	
31500	13.5	111	16.0	111	19.7	117	
40000	16.2	133	19.1	133	23.5	141	
50000	19.4	158	22.9	158	28.2	166	
63000	22.9	187	27.0	187	33.3	198	

110kV

油浸式电力变压器 Oil-immersed power transformer

110kV 油浸式三相三绕组无励磁调压变压器技术参数

Technical parameters of 110kV oil-immersed three-phase three-winding unexcited voltage regulator transformer

额定容量 Rated capacity kVA	1级 level		2级 level		3级 level		短路阻抗 % Short-circuit Impedance %	
	空载损耗 No-load loss kW	负载损耗 Load loss (75°C)kW	空载损耗 No-load loss kW	负载损耗 Load loss (75°C)kW	空载损耗 No-load loss kW	负载损耗 Load loss (75°C)kW	升压 boost	降压 decompression
6300	4.9	40	5.8	40	7.1	42	高—中 17.5 ~ 18.5 高—低 10.5 中—低 6.5	高—中 10.5 高—低 17.5 ~ 18.5 中—低 6.5
8000	5.8	48	6.9	48	8.5	50		
10000	6.9	56	8.2	56	10.1	59		
12500	8.1	67	9.6	67	11.8	70		
16000	9.8	81	11.6	81	14.3	86		
20000	11.6	95	13.7	95	16.9	101		
25000	13.5	113	16.0	113	19.7	120	high-medium 17.5 to 18.5 High - Low 10.5 Medium low 6.5	High school 10.5 high-low 17.5 to 18.5 Medium low 6.5
31500	16.2	134	19.1	134	23.5	142		
40000	19.1	161	22.6	161	27.8	170		
50000	22.9	192	27.0	192	33.3	202		
63000	27.1	230	32.0	230	39.4	243		

110kV

油浸式电力变压器 Oil-immersed power transformer

110kV 油浸式三相双绕组有载调压电力变压器技术参数

Technical parameters of 110kV oil-immersed three-phase double-winding on-load regulating power transformer

额定容量 Rated capacity kVA	1级 level		2级 level		3级 level		短路阻抗 Short-circuit impedance %
	空载损耗 No-load loss kW	负载损耗 Load loss (75°C)kW	空载损耗 No-load loss kW	负载损耗 Load loss (75°C)kW	空载损耗 No-load loss kW	负载损耗 Load loss (75°C)kW	
6300	4.4	32	5.2	32	6.4	33	10.5
8000	5.3	38	6.2	38	7.7	40	
10000	6.2	45	7.3	45	9.0	48	
12500	7.4	53	8.7	53	10.7	56	
16000	8.9	66	10.5	66	12.9	69	
20000	10.6	79	12.5	79	15.4	84	
25000	12.3	94	14.8	94	18.2	99	
31500	14.9	111	17.6	111	21.6	117	
40000	17.8	140	21.0	140	25.8	148	
50000	21.0	175	24.8	175	30.6	184	
63000	25.0	209	29.5	209	36.3	220	



持续创新，稳定品质
Continuous innovation and stable quality

科学管理，提高企业效益
Scientific management to improve business efficiency!

220kV 油浸式电力变压器 Oil-immersed power transformer

产品概述 Product Overview

220kV 油浸式电力变压器依据国际电工委员会标准 IEC60076 和中华人民共和国国家标准 GB1094 制造。该系列产品具有优良的耐冲击性能、机械强度高、抗短路能力强、局放低、低噪音、低损耗、密封性能好、少维护等特点，可作为发电厂主变压器、变电站、城乡电网输变电用。

结构特征 Structural Characteristic

1. 连接成一个钢结构，从而获得较小的空载损耗和较低的噪音。
2. 根据变压器容量的大小，绕组采用圆筒式、螺旋式、连续式等结构，从而有效地改善了冲击电压分布，导线采用换位导线或复合导线，以减少绕组的附加损耗，并采用计算机模拟计算电场和绕组的冲击特性，保证了绕组优良的电气特性和冲击强度，在工艺上则采用有效的措施保证其安全、可靠运行。
3. 变压器器身压紧结构采用整圆绝缘压板。套装工艺采用绕组整体组装，从而提高了产品的可靠性。

220kV oil-immersed power transformers are manufactured in accordance with the International Electrotechnical Commission standard IEC60076 and the national standard GB1094 of the People's Republic of China. This series of products has excellent impact resistance, high mechanical strength, strong short-circuit resistance, low local discharge, low noise, low loss, good sealing performance, less maintenance and so on, can be used as the main transformer of the power plant, substation, urban and rural power grids for power transmission and transformation.

1. Connected into a steel body structure, so as to obtain smaller no-load loss and lower noise.
2. according to the size of the transformer capacity, the winding adopts cylindrical, spiral, continuous and other structures, so as to effectively improve the shock voltage distribution, the conductor adopts transposed conductor or composite conductor, in order to reduce the additional loss of the winding, and computer simulation calculation of the electric field and the shock characteristics of the winding, to ensure that the winding of the excellent electrical characteristics and the impact of the strength of the winding, and in the process of adopting effective measures to ensure its safe, Reliable operation.
3. Transformer body compression structure adopts the whole round insulation pressure plate. The set process adopts the whole assembly of the winding, so as to improve the reliability of the product.

220kV

油浸式电力变压器 Oil-immersed power transformer

3. 变压器器身压紧结构采用整圆绝缘压板。套装工艺采用绕组整体组装，从而提高了产品的可靠性。
4. 油箱采用平顶结构，箱壁焊有折板式加强铁，提高了油箱的机械强度，降低了变压器的杂散损耗，变压器在油箱内壁装有磁屏蔽。
5. 为防止变压器在运输中产生器身位移，器身在油箱设有定位装置。采用密封式储油柜，使变压器油与大气隔离避免油受潮和老化，端部装有指针式油位计。根据变压器油重，油箱顶部装有压力释放阀，确保了产品的安全运行。

3. Transformer body compression structure adopts the whole round insulation pressure plate. The set process adopts the whole assembly of the winding, so as to improve the reliability of the product.
4. the oil tank adopts flat top structure, the box wall is welded with folded plate strengthening iron, improve the mechanical strength of the oil tank, reduce the stray loss of the transformer, the transformer is equipped with magnetic shielding in the inner wall of the oil tank.
5. in order to prevent the transformer in the transport of the body displacement, the body in the tank is equipped with positioning device. Adopt sealed oil storage cabinet, make transformer oil and atmospheric isolation to avoid oil moisture and aging, end equipped with pointer oil level meter. According to the transformer oil weight, the top of the oil tank is equipped with a pressure release valve to ensure the safe operation of the product.

220kV 油浸式三相双绕组无励磁有载调压电力变压器能效等级

220kV oil-immersed three-phase double-winding non-excited on-load voltage regulator power transformer energy efficiency class

额定容量 Rated capacity kVA	1 级 level		2 级 level		3 级 level		短路阻抗 Short-circuit impedance %
	空载损耗 No-load loss kW	负载损耗 Load loss (75°C) kW	空载损耗 No-load loss kW	负载损耗 Load loss (75°C) kW	空载损耗 No-load loss kW	负载损耗 Load loss (75°C) kW	
31500	15	115	18	115	22	122	12-14
40000	18	134	21	134	26	142	
50000	21	161	25	161	31	170	
63000	25	188	30	188	37	199	
75000	29	213	34	213	42	225	
90000	34	246	40	216	49	259	
120000	41	304	49	304	60	321	
150000	49	360	58	360	71	380	
160000	51	378	60	378	74	399	
180000	56	413	66	413	82	436	
240000	70	484	83	481	102	511	
300000	83	577	98	577	121	609	
360000	95	662	112	662	138	698	
370000	97	675	114	675	141	713	
400000	103	716	122	716	150	755	
420000	106	742	125	742	154	783	

220kV

油浸式电力变压器 Oil-immersed power transformer

220kV 油浸式三相双绕组有载调压电力变压器能效等级

220kV oil-immersed three-phase double-winding non-excited regulator power transformer energy efficiency class

额定容量 Rated capacity kVA	1 级 level		2 级 level		3 级 level		短路阻抗 Short-circuit impedance %	
	空载损耗 No-load loss kW	负载损耗 Load loss (75°C) kW	空载损耗 No-load loss kW	负载损耗 Load loss (75°C) kW	空载损耗 No-load loss kW	负载损耗 Load loss (75°C) kW		
31500	17	115	20	115	24	122	12~14	
40000	20	134	23	134	29	142		
50000	24	161	28	161	34	170		
63000	28	188	33	188	40	199		
90000	35	246	42	246	51	259		
120000	43	304	51	304	63	321		
150000	51	360	60	360	74	380		
180000	59	413	70	413	86	436		
120000	低压 low voltage 66kV、 69kV	45	303	53	303	65		320
150000		53	355	62	355	77		374
180000		62	406	73	406	90		428
240000		77	504	91	504	112		532

220kV 油浸式三相三绕组有载调压电力变压器能效等级

220kV Oil-immersed three-phase, three-winding, on-load voltage-regulated power transformer energy efficiency class

额定容量 Rated capacity kVA	1 级 level		2 级 level		3 级 level		短路阻抗 Short-circuit impedance %
	空载损耗 No-load loss kW	负载损耗 Load loss (75°C) kW	空载损耗 No-load loss kW	负载损耗 Load loss (75°C) kW	空载损耗 No-load loss kW	负载损耗 Load loss (75°C) kW	
31500	19	138	23	138	28	145	高—中 12~14 高—低 22~24 中—低 7~9 high-medium 12 to 14 High - Low 22 to 24 Medium low 7 to 9
40000	23	165	27	165	33	174	
50000	26	194	31	194	38	205	
63000	31	231	36	231	45	244	
90000	40	300	47	300	58	316	
120000	51	369	60	369	74	390	
150000	59	438	70	438	86	463	
180000	68	538	81	538	99	568	
240000	85	667	100	667	123	704	

220kV

油浸式电力变压器 Oil-immersed power transformer

220kV 油浸式三相三绕组无励磁有载调压电力变压器能效等级

220kV oil-immersed three-phase, three-winding, non-excited, on-load voltage-regulated power transformer energy efficiency class


额定容量 Rated capacity kVA	1 级 level		2 级 level		3 级 level		短路阻抗 Short-circuit impedance %	
	空载损耗 No-load loss kW	负载损耗 Load loss (75°C) kW	空载损耗 No-load loss kW	负载损耗 Load loss (75°C) kW	空载损耗 No-load loss kW	负载损耗 Load loss (75°C) kW	升压 boost	降压 pressure drop
31500	18	138	21	138	26	145	高—中 22~24 高—低 12~14 中—低 7~9 high-medium 22 to 24 High - Low 12 to 14 Medium low 7 to 9	高—中 12~14 高—低 22~24 中—低 7~9 high-medium 12 to 14 High - Low 22 to 24 Medium low 7 to 9
40000	21	165	25	165	30	174		
50000	24	194	29	194	35	205		
63000	29	231	34	231	42	244		
90000	37	300	44	300	54	316		
120000	46	369	55	369	68	390		
150000	55	438	65	438	80	463		
180000	62	500	73	500	90	527		
210000	72	616	91	616	112	650		
300000	91	726	108	726	133	767		

220kV 油浸式三相双绕组低压为 66kV 无励磁调压电力变压器能效等级

220kV oil-immersed three-phase double-winding low-voltage 66kV non-excited voltage regulator power transformer energy efficiency class

额定容量 Rated capacity kVA	1 级 level		2 级 level		3 级 level		短路阻抗 Short-circuit impedance %
	空载损耗 No-load loss kW	负载损耗 Load loss (75°C) kW	空载损耗 No-load loss kW	负载损耗 Load loss (75°C) kW	空载损耗 No-load loss kW	负载损耗 Load loss (75°C) kW	
31500	17	129	20	129	24	136	12~14
40000	20	150	23	150	29	159	
50000	23	180	27	180	34	190	
63000	28	211	33	211	40	222	
90000	36	275	43	275	53	391	
120000	45	330	53	330	65	349	
150000	53	387	63	387	78	409	
180000	61	438	72	438	88	463	
240000	75	543	88	543	109	573	



 持续创新, 稳定品质
 Continuous innovation and stable quality

 科学管理, 提高企业效益
 Scientific management to improve business efficiency!

DH15-M.R

单相柱上变压器

Single-phase column-mounted transformer

产品概述 Product Overview

基于电磁感应原理。当高压电能通过高压线圈流过时,产生的磁场会在铁芯中产生磁通量。这个磁通量会进一步感应出低压线圈中的电动势,从而将高压电能转换为低压电能。具体来说,当柱上式变压器连接到电源后,由于电流的通过,在线圈中会产生磁通,这个磁通会穿过线圈内部和外部的磁路,最终形成磁链。由于线圈内部的磁链是由电流产生的,因此称之为自感磁链或电感磁链。当变压器中两个线圈的匝数不同时,变压器中的电压就会发生变化,这是由于磁通在通过不同匝数的线圈时,在线圈的内部和外部会产生不同的电压。

Based on the principle of electromagnetic induction. When high voltage electrical energy flows through a high voltage coil, the resulting magnetic field creates a magnetic flux in the iron core. This magnetic flux further induces an electromotive force in the low-voltage coil, thus converting the high-voltage electrical energy into low-voltage electrical energy. Specifically, when a column-mounted transformer is connected to a power source, a magnetic flux is generated in the coil due to the passage of current, and this flux travels through the magnetic paths inside and outside the coil, eventually forming a magnetic chain. Since the magnetic chain inside the coil is generated by the current, it is called self-inductive or inductive magnetic chain. When two coils in a transformer have different number of turns, the voltage in the transformer changes, this is due to the fact that the magnetic flux produces different voltages inside and outside the coil when it passes through coils with different number of turns.

产品特点 Product characteristics

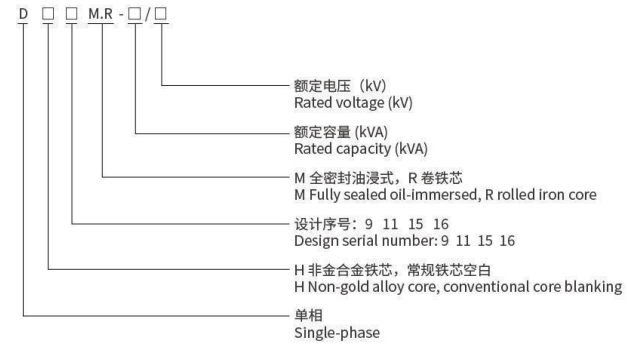
单相柱上变压器的结构主要包括高压线圈、低压线圈、铁芯和油箱等部分。铁芯有圆柱形和矩形两种,其中圆柱形铁芯结构较为简单。变压器整体安装在电力线路的柱子上,便于维护 and 操作。

The structure of single-phase column transformer mainly includes high-voltage coil, low-voltage coil, iron core and oil tank and other parts. There are two kinds of iron core: cylindrical and rectangular, of which the cylindrical core structure is simpler. The transformer as a whole is installed on the column of the power line, which is convenient for maintenance and operation.

DH15-M.R

单相柱上变压器 Single-phase column-mounted transformer

型号含义 Model meaning

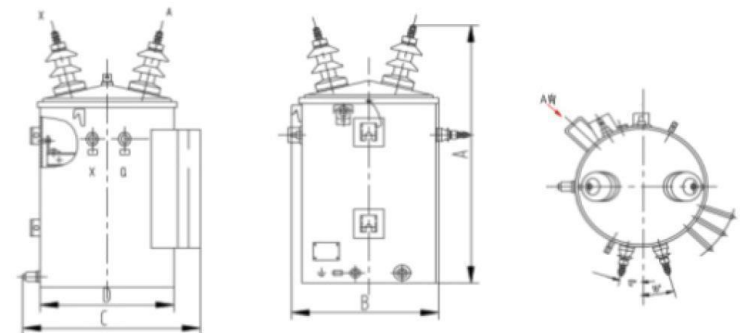


执行标准 Implementation standards

- GB 1094.1-1996 《电力变压器 第1部分 总则》
- GB 1094.2-1996 《电力变压器 第2部分 温升》
- GB 1094.3-2003 《电力变压器 第3部分 绝缘水平、绝缘试验和绝缘空气间隙》
- GB 1094.5-2003 《电力变压器 第5部分 承受短路的能力》
- JB/T10317-2002 《单相油浸式电力变压器技术参数和要求》

- GB 1094.1-1996 Power Transformer Part 1 General Provisions
- GB 1094.2-1996 Power transformers Part 2 Temperature rise
- GB 1094.3-2003 Power transformers Part 3 Insulation level, insulation test and insulation air gap
- GB 1094.5-2003 Power transformers Part 5 Short-circuit capability
- JB/T10317-2002 Single-phase oil-immersed power transformer technical parameters and requirements

产品结构 Product structure



DH15-M.R

单相柱上变压器 Single-phase column-mounted transformer

D11-M.R 系列单相柱上式配电变压器参数 (普通硅钢铁芯)

D11-M.R series single-phase column-mounted distribution transformer parameters (ordinary silicon steel core)

型号 Model number	额定容量 Rated capacity kVA	电压组合 (V) Voltage combination			损耗 W depletion	
		高压 High voltage	分接范围 Tap range	低压 Low voltage	空载 unladen	负载 load
D11-3	3	33000 30000 17321 11547 13800 7967 7620 6350 或其他	±2×2.5% 或 其它	120 220 240 250 或其他	9	45
D11-5	5				19	75
D11-10	10				36	120
D11-15	15				50	195
D11-25	25				80	290
D11-37.5	37.5				105	360
D11-50	50				135	500
D11-75	75				190	650
D11-100	100				210	850
DH11-167	167				350	1410
D11-250	250				500	2000
D11-333	160				650	2500

DH15-M.R

单相柱上变压器 Single-phase column-mounted transformer

DH15-M.R 系列单相柱上式电力变压器参数 (非合金铁芯)

DH15-M.R series single-phase column-mounted power transformer parameters (non-gold alloy core)

型号 Model number	额定容量 Rated capacity kVA	电压组合 (V) Voltage combination			损耗 W depletion	
		高压 High voltage	分接范围 Tap range	低压 Low voltage	空载 unladen	负载 load
DH15-3	3	33000 30000 17321 11547 13800 7967 7620 6350 或其他	±2×2.5% 或 ±5%	220 230 440 460 或其他	12	120
DH15-5	5				15	145
DH15-10	10				18	260
DH15-16	16				22	365
DH15-20	20				25	430
DH15-30	30				30	625
DH15-40	40				35	775
DH15-50	50				40	950
DH15-63	63				50	1135
DH15-80	80				60	1400
DH15-100	100				70	1650
DH15-125	125				85	1950
DH15-160	160	100	2365			

10kV 级 SCB12、SCB14、SCB18

环氧树脂浇注干式电力变压器 Epoxy resin cast dry type power transformer

SCB12 环氧树脂浇注干式电力变压器技术参数 SCB12 epoxy resin cast dry type power transformer technical parameters

额定容量 Rated capacity kVA	电工钢带 Electrical steel band SCB12				短路阻抗 Short-circuit impedance %
	空载损耗 No load loss W	负载损耗 Load loss w			
		B(100°C)	F(120°C)	H(145°C)	
30	150	670	710	760	4.0
50	215	940	1000	1070	
80	295	1290	1380	1480	
100	320	1480	1570	1690	
125	375	1740	1850	1980	
160	430	2000	2130	2280	
200	495	2370	2530	2710	
250	575	2590	2760	2960	
315	705	3270	3470	3730	
400	785	3750	3390	4280	
500	930	4590	4880	5230	
630	1070	5530	5880	6390	
630	1040	5610	5960	6400	
800	1215	6550	6960	7460	
1000	1415	7650	8130	8760	
1250	1670	9100	9690	10370	
1600	1960	11050	11730	12580	
2000	2440	13600	14450	15560	
2500	2880	16150	17170	18460	
					6.0

SCB14 环氧树脂浇注干式电力变压器技术参数 SCB14 epoxy resin cast dry type power transformer technical parameters

额定容量 Rated capacity kVA	电工钢带 Electrical steel band SCB14				短路阻抗 Short-circuit impedance %
	空载损耗 No load loss W	负载损耗 Load loss w			
		B(100°C)	F(120°C)	H(145°C)	
30	130	605	640	685	4.0
50	185	845	900	965	
80	250	1160	1240	1330	
100	270	1330	1415	1520	
125	320	1565	1665	1780	
160	365	1800	1915	2050	
200	420	2135	2275	2440	
250	490	2330	2485	2665	
315	600	2945	3125	3365	
400	665	3375	3590	3850	
500	790	4130	4390	4705	
630	910	4975	5290	5660	
630	885	5050	5365	5760	
800	1035	5895	6265	6715	
1000	1205	6885	7315	7885	
1250	1420	8790	8720	9335	
1600	1665	9945	10555	11320	
2000	2075	12240	13005	14005	
2500	2450	14535	15445	16605	
					6.0

10kV 级 SCB12、SCB14、SCB18

环氧树脂浇注干式电力变压器 Epoxy resin cast dry type power transformer

SCB18 环氧树脂浇注干式电力变压器技术参数 SCB18 epoxy resin cast dry type power transformer technical parameters

额定容量 Rated capacity kVA	电工钢带 Electrical steel band SCB18				短路阻抗 Short-circuit impedance %
	空载损耗 No load loss W	负载损耗 Load loss w			
		B(100°C)	F(120°C)	H(145°C)	
30	105	605	645	685	4.0
50	155	845	900	965	
80	210	1160	1240	1330	
100	230	1360	1415	1520	
125	270	1565	1655	1780	
160	310	1800	1915	2050	
200	360	2135	2275	2440	
250	415	2330	2485	2665	
315	510	2945	3125	3355	
400	570	3375	3590	3850	
500	670	4130	4390	4705	
630	775	4975	5290	5660	
630	750	5050	5365	5760	
800	875	5895	6365	6715	
1000	1020	6885	7315	7885	
1250	1205	8190	8720	9335	
1600	1415	9945	10555	11320	
2000	1760	12240	13005	14005	
2500	2080	14535	15445	16605	
					6.0

注：尺寸仅供参考，以实际提供的图纸和尺寸为准。
Note: The dimensions are for reference only and are subject to the actual drawings and dimensions provided.

10kV SCBH15、SCBH17、SCBH19

非晶合金干式电力变压器 Amorphous alloy dry type power transformer

产品特点 Product characteristics

本铁芯由非晶合金带材卷制而成，采用矩形截面，三相五柱结构或三相三柱结构，空载损耗比普通的干式变压器降低四分之三，节能效果显著。

低压线圈采用铜箔绕制，高压线圈采用环氧树脂经真空浇注而成或者选用 Nomex 绝缘材料，采用连续式结构，并经 VPI 真空加压设备多次浸渍 H 级无溶剂绝缘、高温烘焙固化，机械强度高，散热效果好，承受短路能力强。

- 阻燃、防爆、不污染、防火等级高。
- 噪音低、体积小、安装简单、免维护。
- 局部放电量小、绝缘水平高、产品使用寿命长。
- “三防”能力极佳，无龟裂现象。
- 本产品寿命期后能分解回收，永不污染环境。
- 过载能力强，120% 负载下可长期安全运行。

The core is made of amorphous alloy strip coil, adopts rectangular section, three-phase five-column structure or three-phase three-column structure, and the no-load loss is three-quarters lower than that of ordinary dry transformer, and the energy saving effect is remarkable.

The low-pressure coil is wound with copper foil, and the high-pressure coil is cast with epoxy resin by vacuum or Nomex insulating material. The continuous structure is adopted, and the VPI vacuum pressurizing equipment has repeatedly impregnated H-class solventless insulation and high temperature baking and curing. The mechanical strength is high, the heat dissipation effect is good, and the ability to withstand short circuit is strong.

- Flame retardant, explosion-proof, non-pollution, high fire rating.
- Low noise, small size, simple installation, maintenance-free.
- Small local discharge, high insulation level, long product service life.
- Excellent ability of "three prevention", no cracking phenomenon.
- This product can be decomposed and recycled after the life period, and will never pollute the environment.
- Strong overload capacity, long-term safe operation under 120% load.

持续创新，稳定品质
Continuous innovation and stable quality

科学管理，提高企业效益
Scientific management to improve business efficiency!

10kV SCBH15、SCBH17、SCBH19 非晶合金干式电力变压器 Amorphous alloy dry type power transformer

产品概述 Product Overview

本公司运用成熟技术开发设计的 SCBH15、SCBH17、SCBH19 型非晶合金干式电力变压器，性能优越，产品安全、可靠、环保，可深入负荷中心，适应高密度负荷的现代化大城市发展的需要。该产品大幅度降低了空载损耗、负载损耗，是当今世界前沿的干式变压器。

本产品具有阻燃、自熄、耐潮、抗潮、抗裂和免维护等优点，可广泛用于高层建筑、商业中心、地铁、机场、车站、工矿企业和发电厂，特别适合于易燃、易爆等防火要求高的场所安装使用。

SCBH15、SCBH17、SCBH19 amorphous alloy dry power transformers developed and designed by the company with mature technology have superior performance, product safety, reliability and environmental protection, and can go deep into the load center to meet the needs of the development of modern large cities with high density load. The product greatly reduces no-load loss, load loss, is the world's leading dry transformer.

This product has the advantages of flame retardant, self-extinguishing, moisture resistance, moisture resistance, crack resistance and maintenance-free, etc. It can be widely used in high-rise buildings, commercial centers, subways, airports, stations, industrial and mining enterprises and power plants, especially suitable for flammable, explosive and other places with high fire protection requirements.

型号含义 Model meaning



10kV SCBH15 非晶合金干式电力变压器技术参数

Technical parameters of 10kV SCBH15 amorphous alloy dry type power transformer

额定容量 Rated capacity (kVA)	高压 High voltage (kV)	高压分接范围 High pressure tap range (%)	低压 Low voltage (kV)	联结组别号 Join group label	非晶合金 (15 型) Amorphous alloy (Type 15)				空载电流 No-load current %	短路阻抗 Short- circuit impedance (%)
					空载损耗 No-load loss W	负载损耗 Load loss W				
						B(100°C)	F(120°C)	H(145°C)		
30	6 6.3 6.6 10 10.5 11	±2× 2.5 ±5	0.4	Dyn11 Yyn0	70	670	710	760	2.00	4.0
50					90	940	1000	1070	2.00	
80					120	1290	1380	1480	1.50	
100					130	1480	1570	1690	1.50	
125					150	1740	1850	1980	1.30	
160					170	2000	2130	2280	1.30	
200					200	2370	2530	2710	1.10	
250					230	2590	2760	2960	0.90	
315					280	3270	3470	3730	0.80	
400					310	3750	3990	4280	0.80	
500					360	4590	4880	5230	0.80	
630					420	5530	5880	6290	0.70	
630					410	5610	5960	6400	0.70	
800					480	6550	6960	7460	0.70	
1000					550	7650	8130	860	0.70	
1250	650	9100	9690	10370	0.70					
1600	760	11050	11730	12580	0.70					
2000	1000	13600	14450	15560	0.70					
2500	1200	16150	17170	18450	0.70					

10kV SCBH15、SCBH17、SCBH19

非晶合金干式电力变压器 Amorphous alloy dry type power transformer

10kV SCBH17 非晶合金干式电力变压器技术参数

Technical parameters of 10kV SCBH17 amorphous alloy dry type power transformer

额定容量 Rated capacity (kVA)	高压 High voltage (kV)	高压分接范围 High pressure tap range (%)	低压 Low voltage (kV)	联结组标号 Join group label	非晶合金 (17 型) Amorphous alloy (Type 17)			空载电流 No-load current %	短路阻抗 Short- circuit impedance (%)	
					空载损耗 No-load loss W	负载损耗 Load loss W				
						B(100°C)	F(120°C)			H(145°C)
30	6 6.3 6.6 10 10.5 11	±2× 2.5 ±5	0.4	Dyn11 Yyn0	60	605	640	685	2.00	4.0
50					75	845	900	965	2.00	
80					100	1160	1240	1330	1.50	
100					110	1330	1415	1520	1.50	
125					130	1565	1665	1780	1.30	
160					145	1800	1915	2050	1.30	
200					170	2135	2275	2440	1.10	
250					195	2330	2485	2665	0.90	
315					235	2945	3125	3355	0.80	
400					265	3375	3590	3850	0.80	
500					305	4130	4390	4705	0.80	
630					360	4975	5290	5660	0.70	
630					350	5050	5365	5760	0.70	
800					410	5895	6265	6715	0.70	
1000					470	6885	7315	7885	0.70	
1250					550	8190	8720	9335	0.70	
1600					645	9945	10555	11320	0.70	
2000					850	12240	13005	14005	0.70	
2500					1020	14535	15445	16605	0.70	

10kV SCBH15、SCBH17、SCBH19

非晶合金干式电力变压器 Amorphous alloy dry type power transformer

10kV SCBH19 非晶合金干式电力变压器技术参数

Technical parameters of 10kV SCBH19 amorphous alloy dry type power transformer

额定容量 Rated capacity (kVA)	高压 High voltage (kV)	高压分接范围 High pressure tap range (%)	低压 Low voltage (kV)	联结组标号 Join group label	非晶合金 (19 型) Amorphous alloy (Type 19)			空载电流 No-load current %	短路阻抗 Short- circuit impedance (%)	
					空载损耗 No-load loss W	负载损耗 Load loss W				
						B(100°C)	F(120°C)			H(145°C)
30	6 6.3 6.6 10 10.5 11	±2× 2.5 ±5	0.4	Dyn11 Yyn0	50	605	640	685	2.00	4.0
50					60	845	900	965	2.00	
80					85	1160	1240	1330	1.50	
100					90	1330	1415	1520	1.50	
125					105	1565	1665	1780	1.30	
160					120	1800	1915	2050	1.30	
200					140	2135	2275	2440	1.10	
250					160	2330	2485	2665	0.90	
315					195	2945	3125	3355	0.80	
400					215	3375	3590	3850	0.80	
500					250	4130	4390	4705	0.80	
630					295	4975	5290	5660	0.70	
630					290	5050	5365	5760	0.70	
800					335	5895	6265	6715	0.70	
1000					385	6885	7315	7885	0.70	
1250					455	8190	8720	9335	0.70	
1600					530	9945	10555	11320	0.70	
2000					700	12240	13005	14005	0.70	
2500					840	14535	15445	16605	0.70	



持续创新，稳定品质
Continuous innovation and stable quality

科学管理，提高企业效益
Scientific management to improve business efficiency!

35kV 级 SC(B)12、SC(B)14、SC(B)18 环氧树脂浇注干式电力变压器 Epoxy resin cast dry type power transformer

产品概述 Product Overview

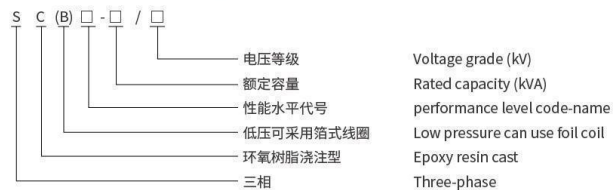
本系列产品用于将 35kV 电网电源直接降低为 400V 配电电源或 10kV 输电电源为用户供电，由于具有显著优点，为越来越多的工程所采用。其主要优点有：

- 减少占地和多级变电工程建设，具有显著的社会效益。
- 节省工程投资，提高经济效益。
- 减少 10kV 输变电环节，使运行维护费用明显降低。
- 35kV 电源直接进入用电中心，有效提高供电的可靠性。

This series of products is used to directly reduce the 35kV grid power supply to 400V distribution power supply or 10kV transmission power supply for the user, because of its significant advantages, more and more projects are used. Its main advantages are:

- Reduce the area and multi-stage power transformation project construction, with significant social benefits.
- Save project investment and improve economic efficiency.
- Reduce 10kV power transmission and transformation links, so that the operation and maintenance costs are significantly reduced.
- 35kV power supply directly into the power supply center, effectively improve the reliability of power supply.

型号含义 Model meaning



35kV 级 SC(B)12、SC(B)14、SC(B)18

环氧树脂浇注干式电力变压器 Epoxy resin cast dry type power transformer

产品特点 Characteristics of the product

我公司生产的 SC(B)12、SC(B)14、SC(B)18 系列 35kV 级无励磁调压干式变压器属低损耗产品，符合国家标准 GB6450、GB/T10228 和 IEC726 的要求，并具有以下特点：

- 高性能、低损耗，为 10 型系列的换代产品。
- 选用优质硅钢片，同时大幅降低磁通密度，减小运行中硅钢片磁致伸缩量，有效降低噪音。
- 优化高压线圈结构，改善了层间电压和电容的分布，大大提高了产品耐受大气过电压和操作过电压的冲击能力，同时也改善了电场分布，使产品局放量进一步降低。
- 可配置温控系统和风冷装置，在负荷过大时自动启动风机冷却装置，有效提高设备过负荷能力。

Our company produced SC(B)12, SC(B)14, SC(B)18 series of 35kV non-excitation voltage regulation dry transformer is a low loss products, in line with the national standards GB6450, GB/T10228 and IEC726 requirements, and has the following characteristics:

- High performance, low loss, replacement of Type 10 series.
- High-quality silicon steel sheet is selected to greatly reduce the magnetic flux density, reduce the magnetostriction amount of silicon steel sheet in operation, and effectively reduce noise.
- Optimized the high-voltage coil structure, improved the distribution of interlayer voltage and capacitance, greatly improved the impact ability of the product to withstand atmospheric overvoltage and operating overvoltage, and also improved the electric field distribution, which further reduced the volume of the product.
- Temperature control system and air cooling device can be configured to automatically start the fan cooling device when the load is too large, effectively improving the overload capacity of the equipment.

35kV SC(B)12 环氧树脂浇注干式电力变压器技术参数

35kV SC(B)12 epoxy resin cast dry type power transformer technical parameters

额定容量 Rated capacity (kVA)	空载损耗 No load loss kW	负载损耗 Load loss kW			短路阻抗 Short-circuit impedance %
		B (100°C)	F (120°C)	H (145°C)	
1000	1.7	9.8	10.4	11.2	6.0~14.0
1250	2.0	11.9	12.7	13.5	
1600	2.3	14.5	15.4	16.5	
2000	2.7	17.1	18.2	19.4	
2500	3.2	20.5	21.8	23.3	
3000	3.9	22.6	24.0	25.6	
3500	4.3	23.1	24.5	26.1	
4000	5.0	27.7	29.4	31.3	
4500	5.4	30.4	32.3	34.5	
5000	6.0	32.8	34.9	37.3	
6300	7.1	38.4	40.6	43.6	
8000	8.5	46.3	49.2	52.6	
10000	10.2	54.5	52.9	61.9	

35kV 级 SC(B)12、SC(B)14、SC(B)18

环氧树脂浇注干式电力变压器 Epoxy resin cast dry type power transformer

35kV SC(B)14 环氧树脂浇注干式电力变压器技术参数

35kV SC(B)14 epoxy resin cast dry type power transformer technical parameters

额定容量 Rated capacity (kVA)	空载损耗 No load loss kW	负载损耗 Load loss kW			短路阻抗 Short-circuit impedance %
		B (100°C)	F (120°C)	H (145°C)	
1000	1.6	8.8	9.4	10.1	6.0~14.0
1250	1.8	10.7	11.4	12.2	
1600	2.1	13.1	13.9	14.9	
2000	2.5	15.4	16.4	17.5	
2500	2.9	18.5	19.6	21.0	
3000	3.5	20.3	21.6	23.1	
3500	3.9	20.7	22.1	23.5	
4000	4.5	24.9	26.5	28.2	
4500	4.9	27.4	29.1	31.1	
5000	5.4	29.6	31.4	33.6	
6300	6.4	34.6	36.7	39.2	
8000	7.6	41.7	44.3	47.3	
10000	9.1	49.0	52.1	55.7	

35kV SC(B)18 环氧树脂浇注干式电力变压器技术参数

35kV SC(B)18 epoxy resin cast dry type power transformer technical parameters

额定容量 Rated capacity (kVA)	空载损耗 No load loss kW	负载损耗 Load loss kW			短路阻抗 Short-circuit impedance %
		B (100°C)	F (120°C)	H (145°C)	
1000	1.4	8.8	9.4	10.1	6.0~14.0
1250	1.6	10.7	11.4	12.2	
1600	1.9	13.1	13.9	14.9	
2000	2.2	15.4	16.4	17.5	
2500	2.6	18.5	19.6	21.0	
3000	3.2	20.3	21.6	23.1	
3500	3.5	20.7	22.1	23.5	
4000	4.1	24.9	26.5	28.2	
4500	4.4	27.4	29.4	31.1	
5000	4.8	29.6	31.4	33.6	
6300	5.7	34.6	36.7	39.2	
8000	6.9	41.7	44.3	47.3	
10000	8.2	49.0	52.1	55.7	
12500	14.1	-	64.6	-	
16000	17.3	-	76.0	-	